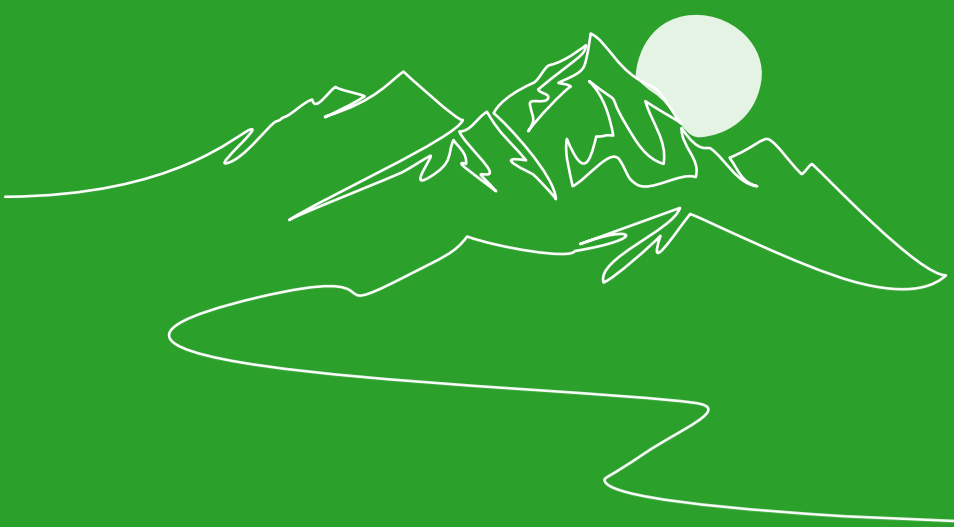
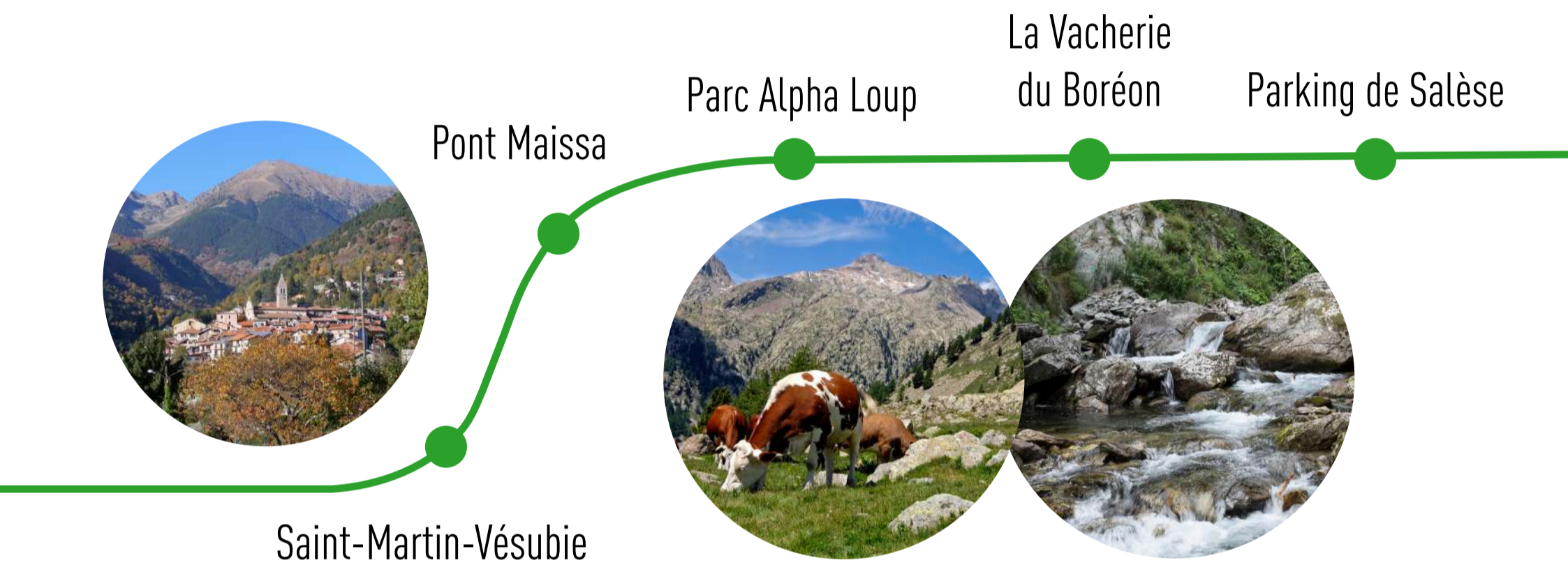


# Hiking shuttle

## LE BORÉON



From Friday to Sunday (and public holidays), from the 5th of July to the 31st of August and the weekends of 6th and 7th, 13th and 14th, 20th and 21st of September 2025



From ➡ the hiking sites :

Friday, Saturday, Sunday and public holidays	
Departures from <b>Saint-Martin-Vésubie</b> towards ➡ Le Boréon	<b>9:10 a.m.*</b>  <b>4:20 p.m</b>
<b>*Connections</b> with the line <b>Été Vésubie</b> from Nice at 7:30 a.m., passing through Saint-Martin-Vésubie at 8:55 a.m.	

Towards ➡ the hiking sites :

Friday, Saturday, Sunday and public holidays	
Departures from Le Boréon (parking Salèse) towards ➡ <b>Saint-Martin-Vésubie</b>	<b>9:45 a.m</b>  <b>4:55 p.m*</b>
<b>*Connections</b> with the line <b>Été Vésubie</b> from la Bolline at 5:15 p.m., passing through Saint-Martin-Vésubie at 5:45 p.m.	

*Accessible with the Lignes d'Azur current fare*

POUR TOUT  
RENSEIGNEMENT  
FOR MORE INFORMATION

MÉTROPOLE  
NICE CÔTE D'AZUR

EXPLORE  
**NICE  
CÔTE  
D'AZUR**  
TOURISME & CONGRÈS

**lignesdazur.com**  
 Du lundi au samedi de 6h à 20h30. Le dimanche de 7h à 20h  
**08 1006 1006** Service 0,06 €/min + prix appel

**LIGNES  
D'AZUR**  
Nice Côte d'Azur en toute liberté